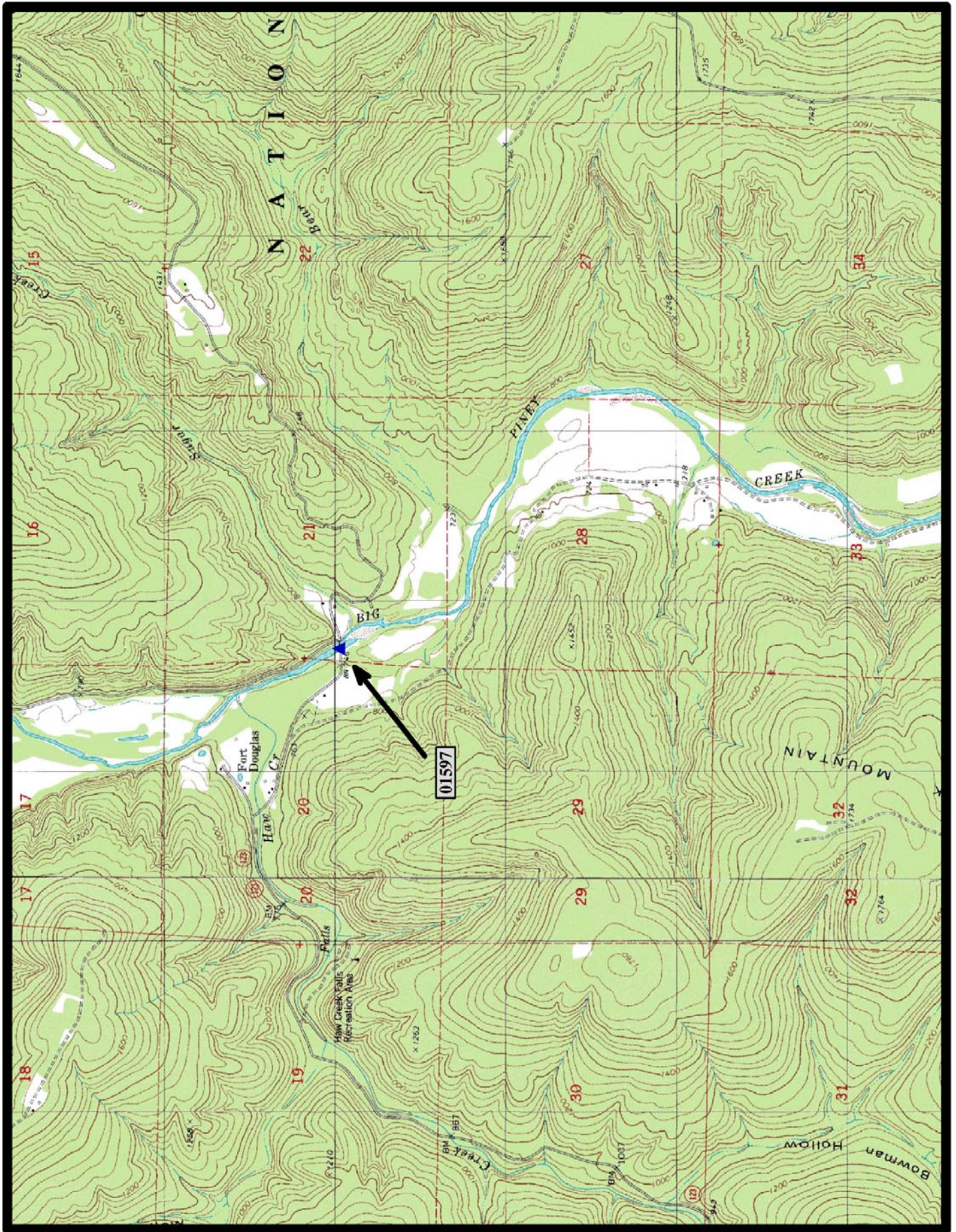


- ▲ In-Service Baltimore Thru Truss (2)
- ⊘ Demolished NR Baltimore Thru Truss (0)
- Preserved Baltimore Thru Truss (0)

Baltimore Thru Truss Bridges



HISTORIC BRIDGE #01597
STATE HIGHWAY 123
JOHNSON COUNTY
BALTIMORE THRU TRUSS
CROSSES - BIG PINEY CREEK
DATE OF CONSTRUCTION – 1931
BUILDER - FRED LUTTJOHANN, TOPEKA, KS
HISTORIC BRIDGE INVENTORY DATE - 1987
SHPO NUMBER - JO0055
HAER NUMBER - AR-22
DATE LISTED ON NATIONAL REGISTER - 4/9/1990
LAT./LONG. 34:40:37.98, -93:14:06.36

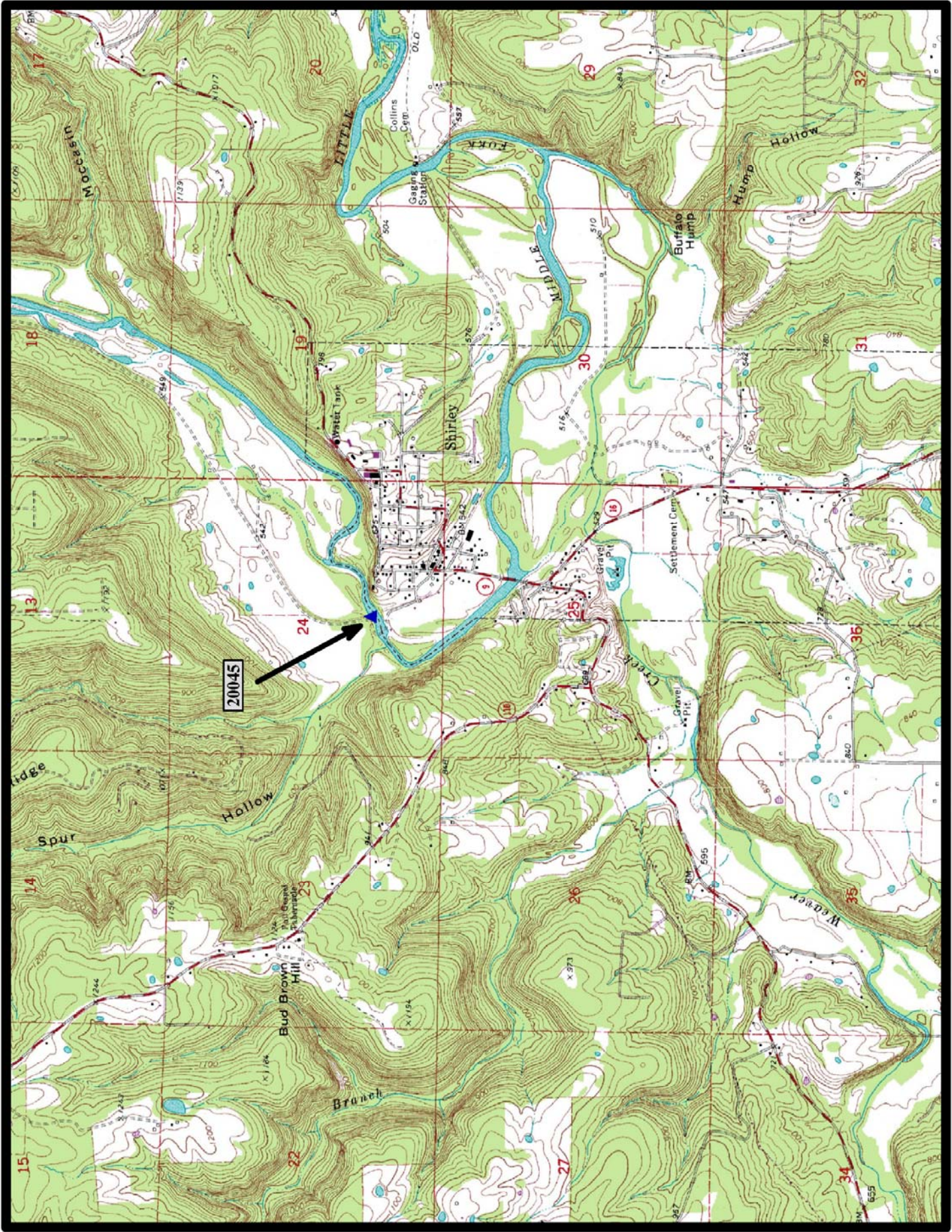


↑
North

Fort Douglas 7.5 min. Quad



HISTORIC BRIDGE #20045
COUNTY ROAD 125
VAN BUREN COUNTY
BALTIMORE THRU TRUSS
DATE OF CONSTRUCTION – 1908
CROSSES - MIDDLE FORK LITTLE RED RIVER
BUILDER - WISCONSIN BRIDGE & IRON COMPANY,
MILWAUKEE, WI
HISTORIC BRIDGE INVENTORY DATE - 2005
SHPO NUMBER - VB0166
HAER NUMBER - AR-76
DATE LISTED ON NATIONAL REGISTER -
LAT./LONG. 35:39:34.16, -92:19:19.28



Shirley 7.5 min. Quad

North